

CHANGING FROM A STRAIGHT CORK CORKING MACHINE TO A “VINO-LOK” CAPPING MACHINE

- 1) Close the corking machine with the punch at the upper dead centre and remove the cover of the capping head (fig. 1).



Figure 1

- 2) Ensure that the section of the cam is perfectly in line with the box and remove the packet of pegs (fig. 2, fig. 3).



Figure 2



Figure 3

- 3) Remove the centering unit and the screws used for fastening it (Fig. 4).



Figure 4

- 4) Keep the “Vino-Lok” head ready along with the screws used for fastening it (fig. 5).



Figure 5

- 5) Mount the “Vino-Lok” head and adjust it with the same mounting holes as those used for the centering unit of the corking machine (fig. 6).



Figure 6

Fasten the top part with the knobs on the lid (fig. 7).



Figure 7

- 6) To facilitate the operation, it may be necessary to unfasten the fixing screws of the top bracket (fig. 8).



Figure 8

- 7) Fully mounted “Vino-Lok” modification kit (fig. 9)



Figure 9

- 8) Adjust the height of the capping machine: the distance between the mouth of the bottle and edge of the capping head must at least be 15 mm and not more than 20 mm (fig. 10).



Figure 10

9) Loading the canal.

It is necessary to load the canal before the caps descend below the level indicated in figure 11. This is to ensure adequate force that would push the caps inside the capping head.



Figure 11

Collecting the caps with the gripper (fig. 12): lift the lower handle and collect the caps



Figure 12

Grip the lifted handle and rest the caps on the collection plate (fig. 13).

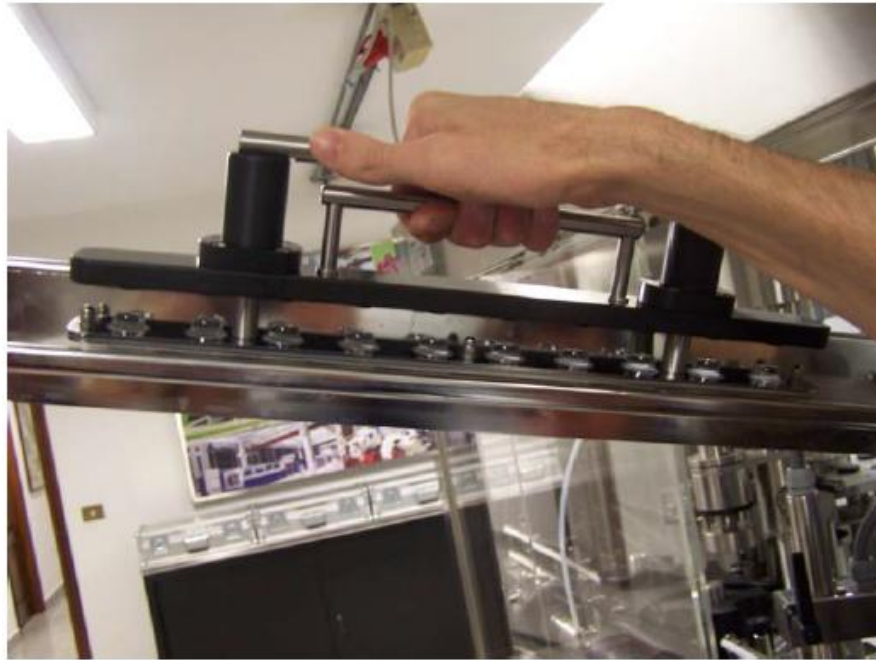


Figure 13

Position and release the caps on the collection plate (fig. 14).
Rest the load gripper such that it is in line with the last cap on the plate.



Figure 14

It is advisable to rest the caps so that the head of the cap is positioned under the groove of the plate, as indicated in figure 15.

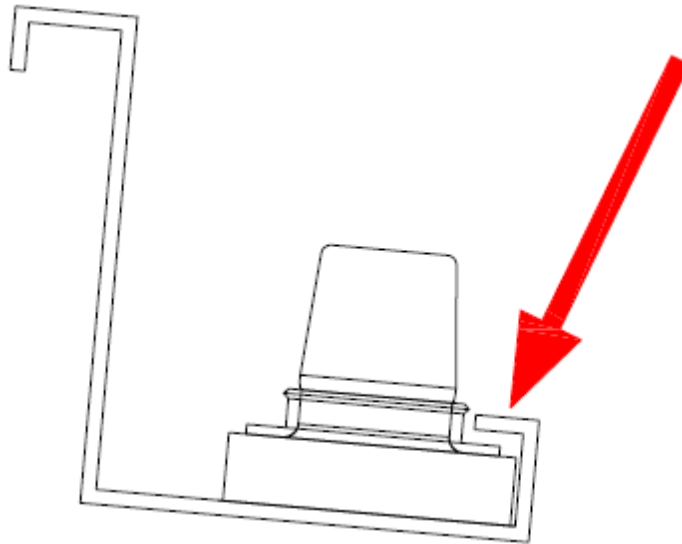


Figure 15

Carry out these two steps to prevent the caps from falling on the collection plate due to the impact they undergo (fig. 16).

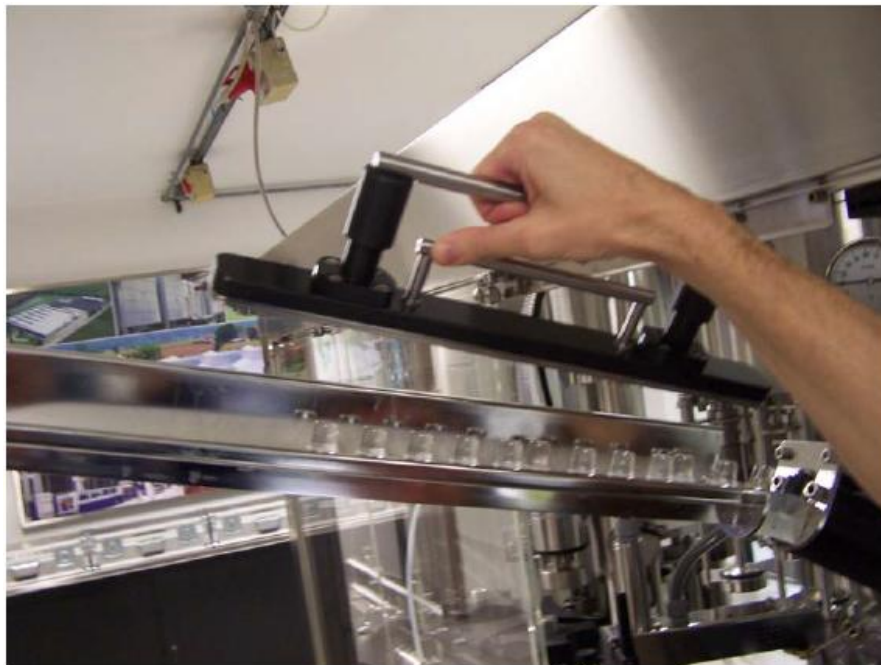


Figure 16

- 10) Capping the bottle: mounting (fig. 17), pressing-in (fig. 18) and removal (fig. 19).



Figure 17



Figure 18



Figure 19

IMPORTANT: Ensure that there are no cork caps that may damage the capping machine in the hopper of the corking machine, descent tube and the cap carrier.

11) Use the gas injector with the Vino-Lok capping machine.

To adjust the gas injector with the Vino-Lok capping machine, perform the following operations (figure 20, figure 21):

- Unfasten grain **G** that blocks the injector from plate **P** and remove the gas injector.
- Unfasten screws **V1** and **V2** and remove plate **P**.
- Disassemble parts **A** and **B** (figure 20) and replace them with parts **A1** and **B1** provided with the machine (figure 21).
- If possible, mark the **C** unit of the injector with 2 **H** markers at 180° corresponding to the holes for the **G1** grains and position it 14 mm below the existing marker (figure 21).
- Insert part **D** and replace plate **P** with the two new screws provided.
- Remount the gas injector
- Position the two **G1** grains corresponding to the two **H** markers (figure 21).

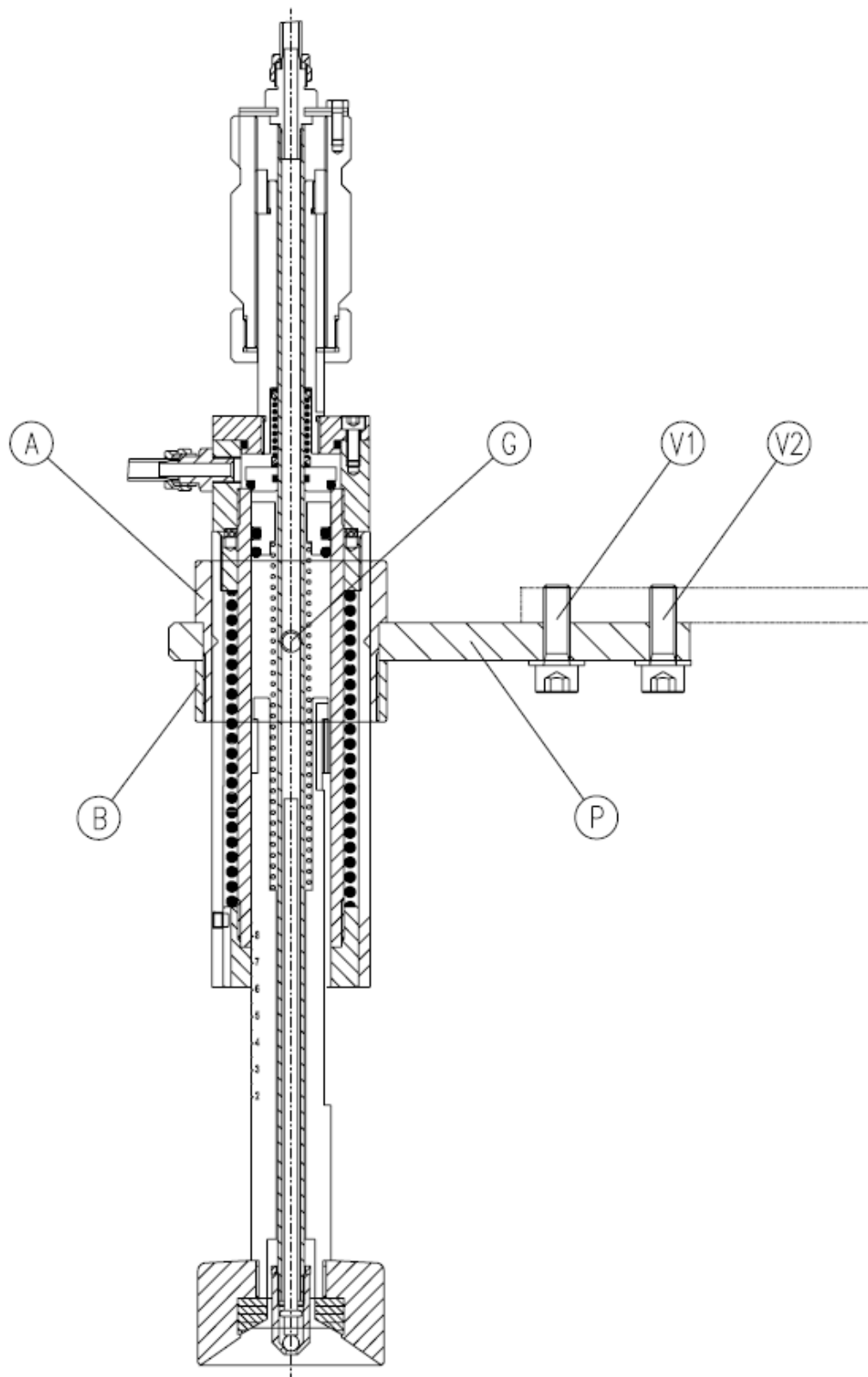


Figure 20: Standard gas injector

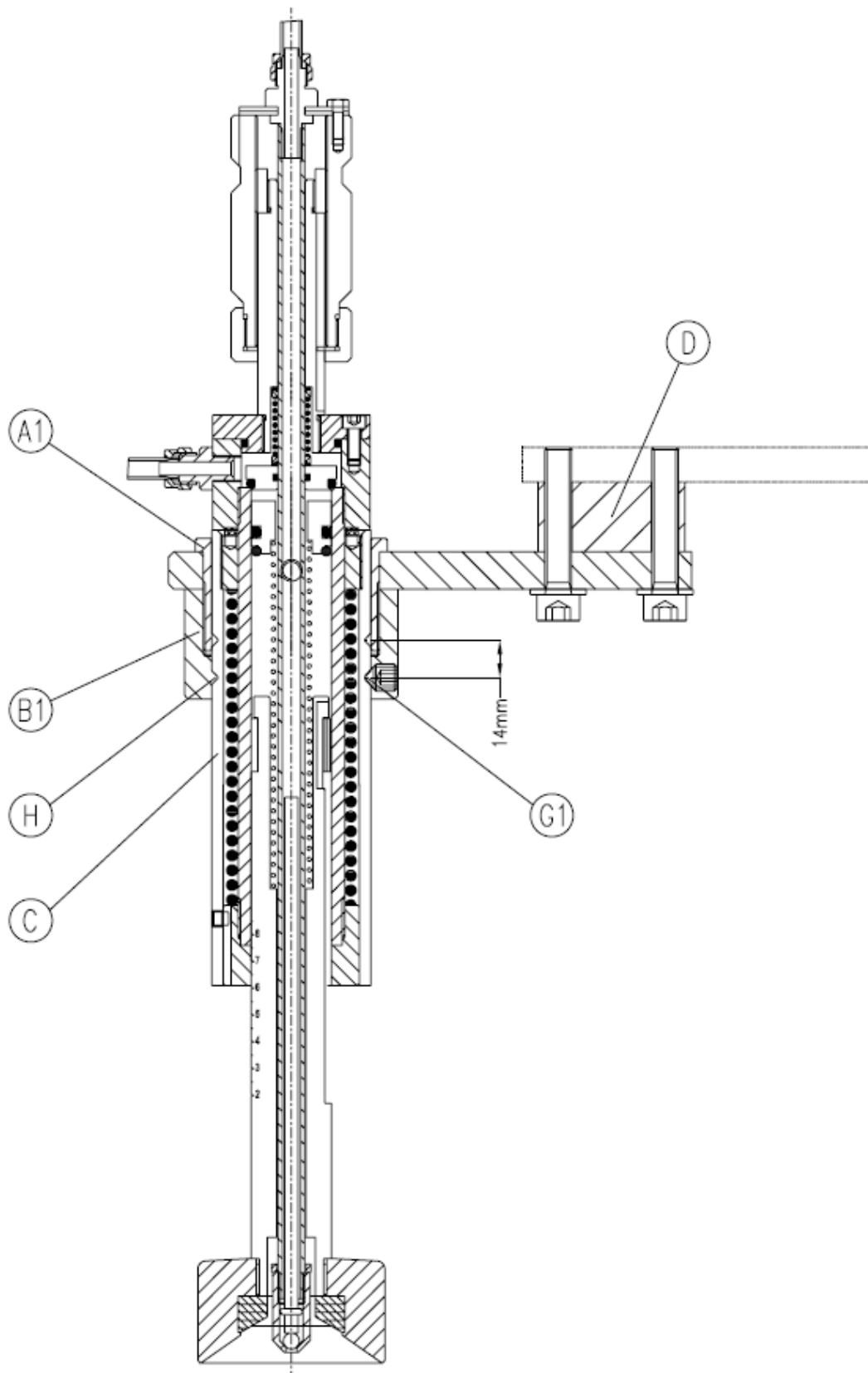


Figure 21: Gas injector adapted to the Vino-Lok corking machine

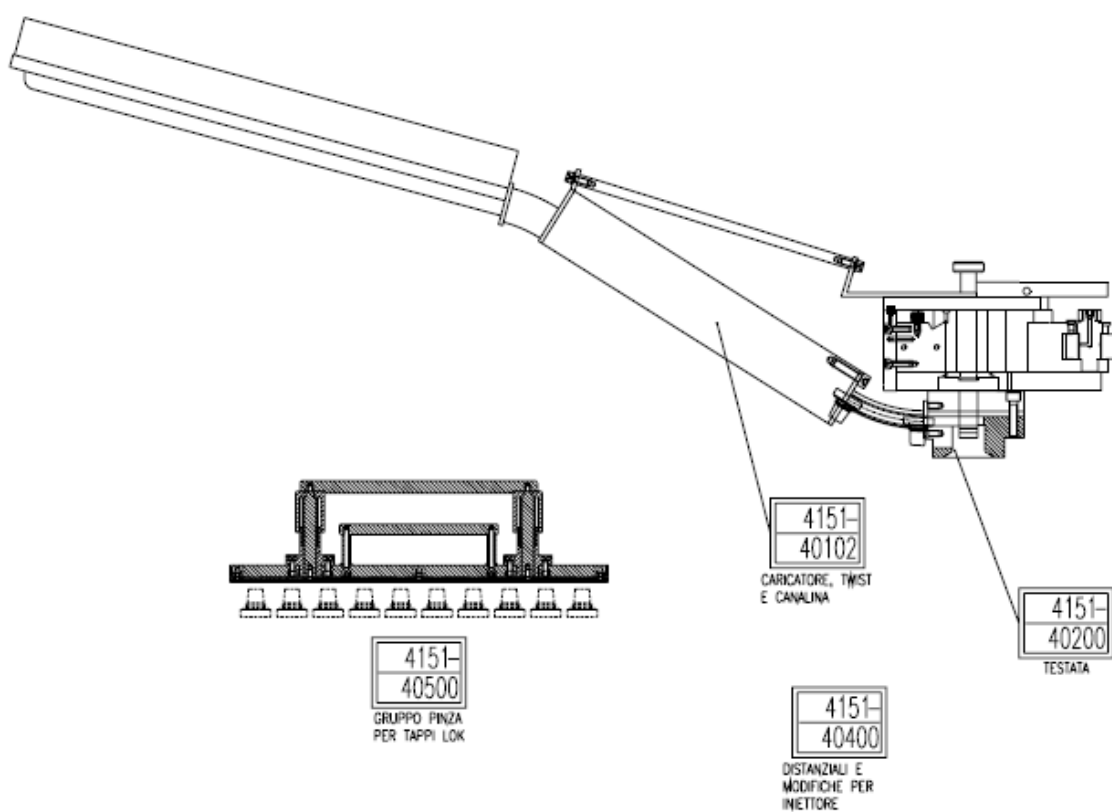
12) Reassemble the gas injector with the corking machine.

To adapt the gas injector to the corking machine, carry out the following steps:

- Remove the gas injector by unfastening the two **G1** grains
- Demount plate **P**
- Remove part **D** and remount plate **P** with part **D** using the two original screws **V1** and **V2**.
- Remount the injector by blocking it with grain **G** located on plate **P** connected to the original grooves on the injector.

Important: The original parts A and B of figure 20 need not be mounted.

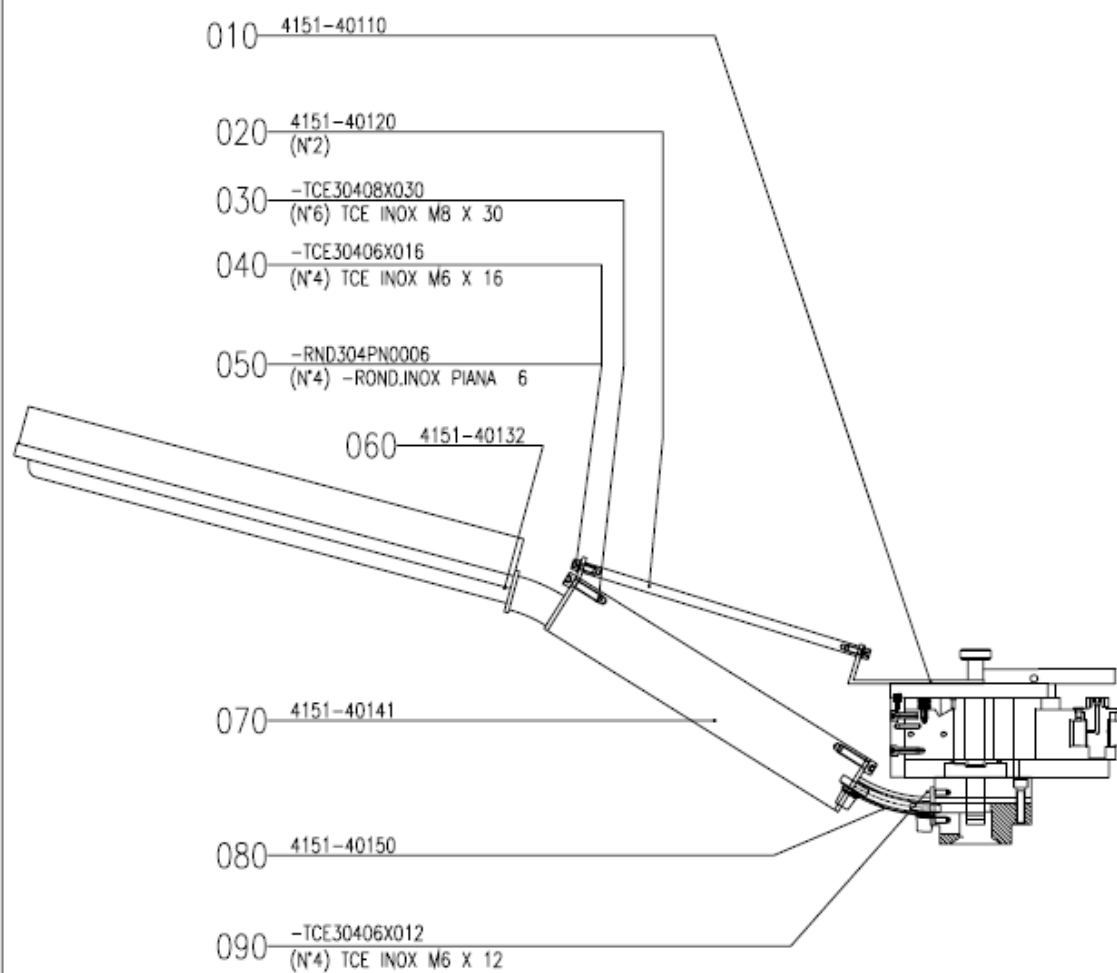
All capping heads for the Vino-Lok cap will be illustrated on the following pages.



GAIs.p.a. • Froz.Coppelli 33b • 12040 CERESOLE D'ALBA
Tel. 0172-574416 • Fax 0172-574088
E-mail: gai@gai-it.com • Internet: www.gai-it.com

4151-40001

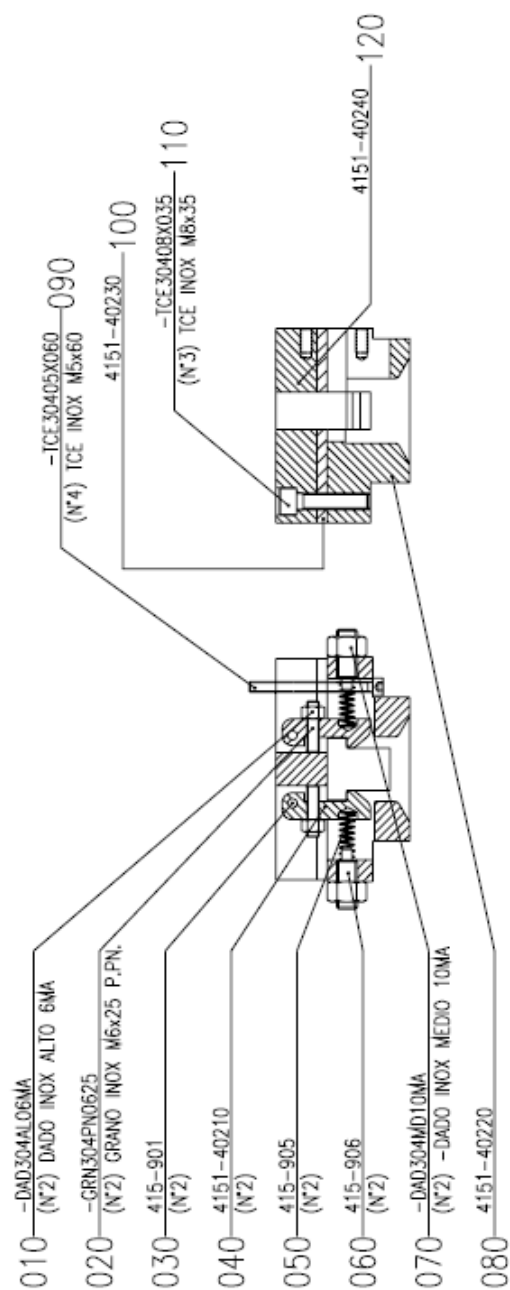
cad 4151-40001



GAIsa. • Fraz.Cappelli 33b • 12040 CERESOLE D'ALBA
Tel. 0172-574416 • Fax 0172-574088
E-mail: gai@gai-it.com • Internet: www.gai-it.com

4151-40102

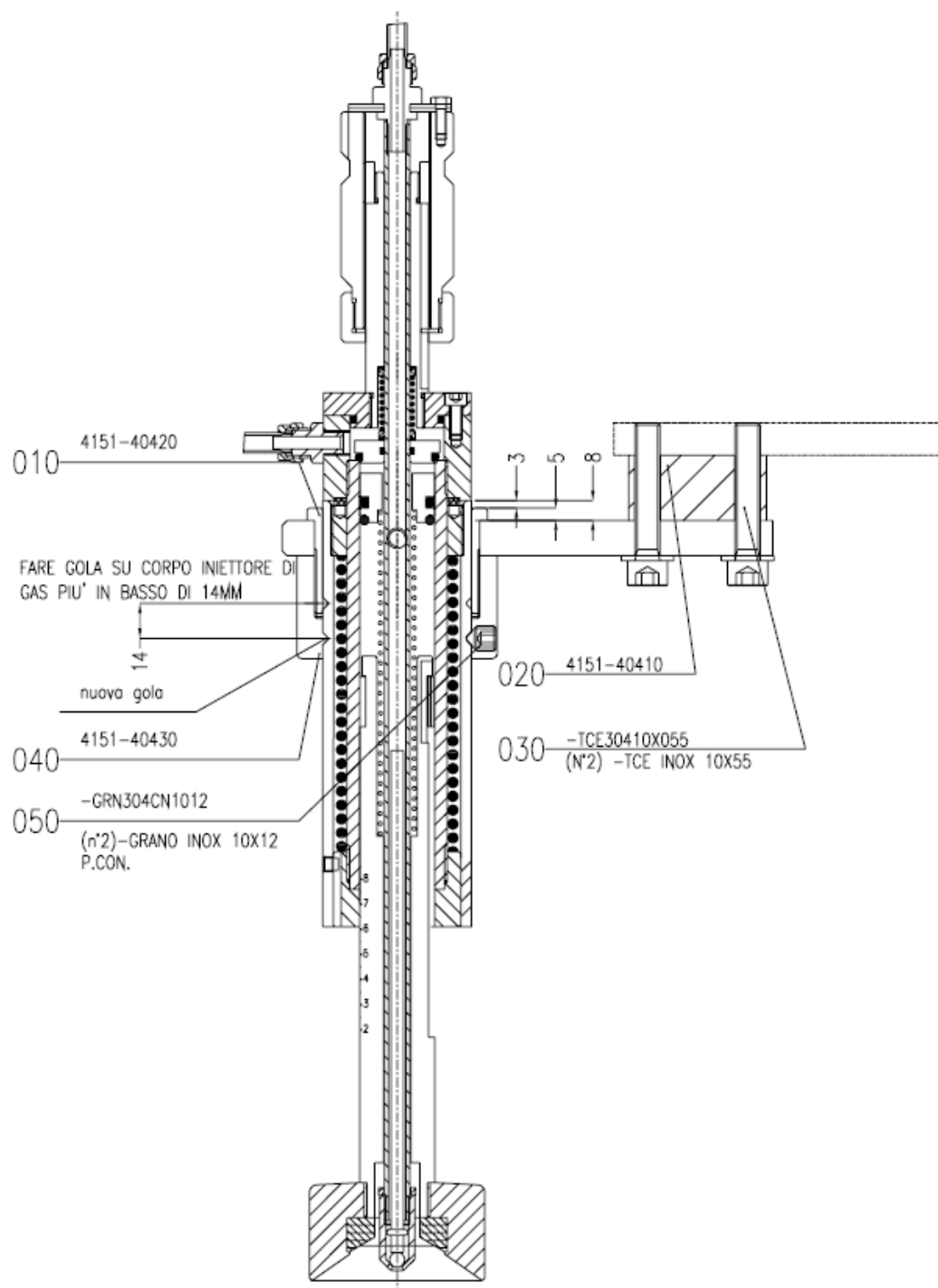
cad 4151-40102



GAI spa. • Froz. Cappelli 33b • 12040 CERESOLE D'ALBA
Tel. 0172-574416 • Fax 0172-574088
E-mail: gai@gai-it.com • Internet: www.gai-it.com

4151-40200

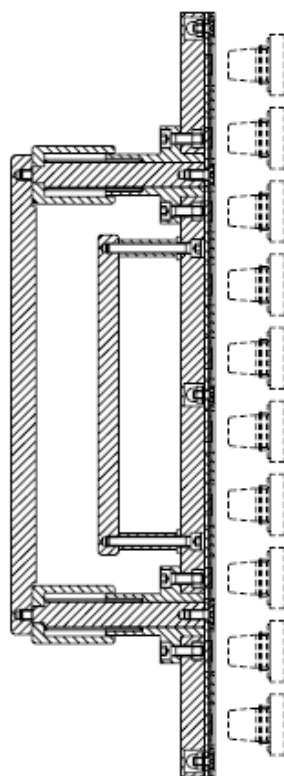
cod 4151-40200



GAI spa. • Froz.Cappelli 33b • 12040 CERESOLE D'ALBA
 Tel. 0172-574416 • Fax 0172-574088
 E-mail: gai@gai-it.com • Internet: www.gai-it.com

4151-40400

cad 4151-40400



GAI spa. • Froz. Cappelli 33b • 12040 CERESOLE D'ALBA
 Tel. 0172-574416 • Fax 0172-574088
 E-mail: gai@gai-it.com • Internet: www.gai-it.com

4151-40500

cod 4151-40500