



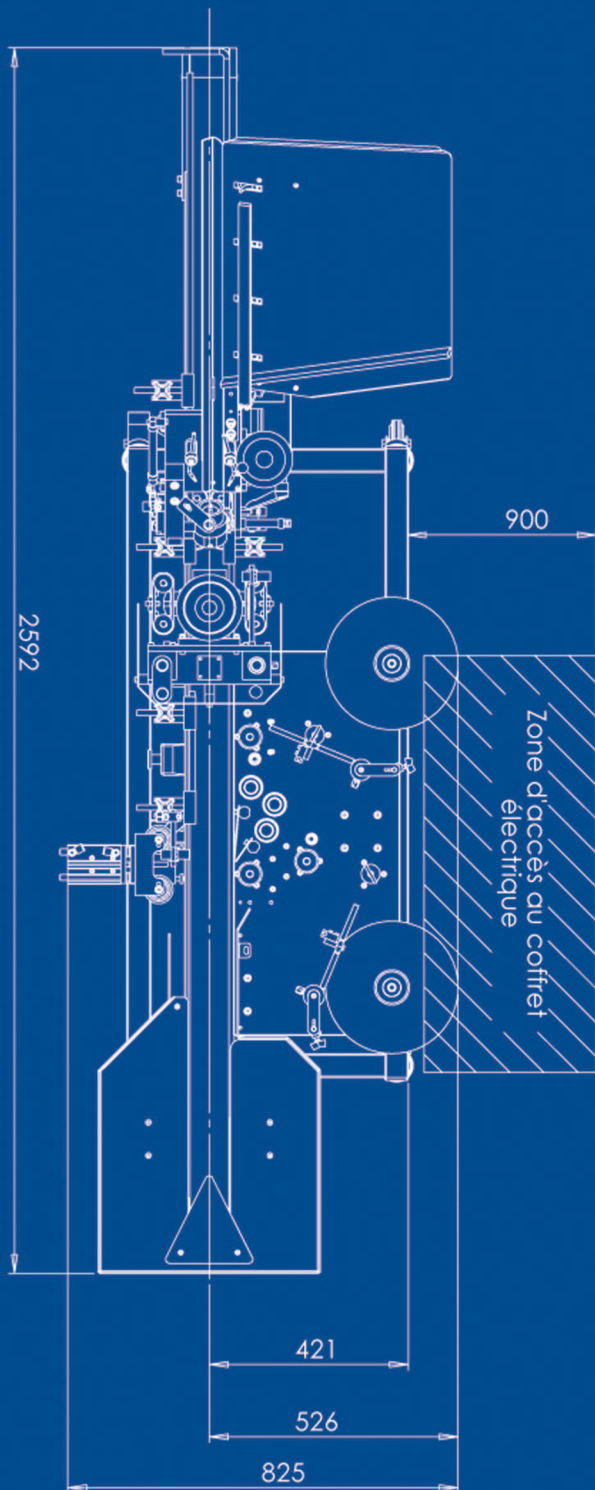
## CDA USA, Inc High Quality Labeling systems



**800 Bts/h**

[www.cda-usa.com](http://www.cda-usa.com)

# ESSENTIEL



CDA USA, Inc  
4333 Carolina Avenue  
Richmond, VA 23222 - USA  
Tel: 804-647-1348  
Fax: 804-422-9366  
contact@cda-usa.com

[www.cda-usa.com](http://www.cda-usa.com)

## GENERAL FEATURES

Motorized conveyor with a rectangular accumulation table

A labeling station for front and back labels

Max. label height: 190 mm (7.5 inches)

Great labeling precision

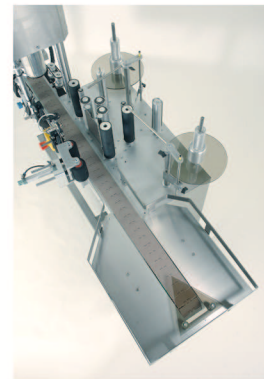
Performance: up to 800 bottles/hour (66 cases/hour)

Crimping station with automatic bottle hold and centring

Machine conceived without star or screw which allows any type of cylindrical bottles



*Crimping station  
with a new generation  
crimper*



*Rectangular  
accumulation table*



*Capsule dispenser  
height setting by crank*



*Labeling station for front and  
back labels on the same roll  
or on two different rolls*

## OPTIONS

Notch, label or design detection

Marking system

Automatic capsule dispenser with bottle hold and centring  
for any bottle sizes

Thermal head crimping

Dealer stamp